

ORDINANCE NO. 1308

AN ORDINANCE OF THE BOROUGH OF DONORA, WASHINGTON COUNTY, COMMONWEALTH OF PENNSYLVANIA, AMENDING, ADDING TO, WIDENING OF AND CONNECTING TO McKEAN AVENUE THE RIGHT-OF-WAY KNOWN AS CYPRESS ALLEY AND THE ACCEPTING, DEDICATING, RE-NAMING AND RE-DESIGNATING OF CYPRESS ALLEY AS A PUBLIC ROADWAY KNOWN AS CYPRESS DRIVE.

BE IT ENACTED AND ORDAINED by the Council of the Borough of Donora, Washington County, Pennsylvania; and it is hereby ordained and enacted by the authority of the same, as follows:

SECTION I. That the right-of-way presently existing and known as Cypress Alley shall be accepted, dedicated, re-named and re-designated as a Public Roadway known as Cypress Drive.

SECTION II. That the right-of-way accepted, re-named and re-designated as a public roadway known as Cypress Drive shall be amended, added to, widened and connected to McKean Avenue as follows:

Beginning at a point, said point being the most southwestern corner of a parcel designated as Donner Park, said point also being the northeastern intersection of Ninth Street and Cypress Drive, formerly known as Cypress Alley;

Thence, along the eastern right-of-way line of said Cypress Drive, North 01° 18' East, a distance of 416.51 feet to a point;

Thence, crossing said Cypress Drive and continuing along the northern line of lot number 32, North 88° 42' West, a distance of 115.00 feet to a point;

Thence, along the eastern right-of-way line of McKean Avenue, North 01° 18' East, a distance of 22.98 feet to a point;

Thence, South 88° 42' East, a distance of 22.28 feet to a point;

Thence, along the southern right-of-way line of a 10 foot wide private alley, South 89° 28' East, a distance of 93.73 feet to a point;

Thence, through the lands of said Donner Park, South 01° 18' West, a distance of 440.73 feet to a point;

Thence, along the northern right-of-way line of said Ninth Street, North 84° 09' 30" West, a distance of 1.003 feet to the place of beginning

SECTION III. That the amendment, addition, widening of and connecting to McKean Avenue of the public roadway now known as Cypress Drive include following center line description from Ninth Street to McKean Avenue:

Beginning at a point, located on the center line of Cypress Drive, said point also being located on the northern right-of-way line of Ninth Street;

Thence, along said center line, the following two (2) courses and distances:


North 01° 18' East, a distance of 427.44 feet to a point;


Thence, North 88° 42' West, a distance of 108.00 feet to the eastern right-of-way line of McKean Avenue.

Total length as described 535.44 feet.

ADOPTED this 11th day of JANUARY, 2001.


ATTEST:



Borough Secretary


Karen Polkabila, President of Council

EXAMINED AND APPROVED this 12th day of JANUARY, 2001.

ATTEST:


Borough Secretary


John Lignelli, Mayor

FOUNDERS:

A. A. McDONALD, P.E.
R. P. BIGLER, P.E.
C. VANCE DEI CAS, P.E.

ESTABLISHED
1920

McDONALD ASSOCIATES

~ ENGINEERING ~

ONE TWILIGHT HOLLOW ROAD
CHARLEROI, PENNSYLVANIA 15022

724-483-8041

FAX 724-483-5690

Suggested Deed Description

For

**One Foot Widening Of Cypress Drive
To Obtain A 16 Foot Right-Of-Way
To Meet Pennsylvania Department of Transportation
Bureau Of Municipal Services
Mileage Addition Guidelines
And Adoption Of
Parcel Of Land To Be Dedicated As A Public Roadway
Connecting Existing Cypress Drive With McKean Avenue**

Beginning at a point, said point being the most southwestern corner of a parcel designated as Donner Park, said point also being the northeastern intersection of Ninth Street and Cypress Drive, formerly known as Cypress Alley;

Thence, along the eastern right-of-way line of said Cypress Drive, N. 01° 18' E., a distance of 416.51 feet to a point;

Thence, crossing said Cypress Drive and continuing along the northern line of lot number 32, N. 88° 42' W., a distance of 115.00 feet to a point;

Thence, along the eastern right-of-way line of McKean Avenue, N. 01° 18' E., a distance of 22.98 feet to a point;

Thence, S. 88° 42' E., a distance of 22.28 feet to a point;

Thence, along the southern right-of-way line of a 10 foot wide private alley, S. 89° 28' E., a distance of 93.73 feet to a point;

Thence, through the lands of said Donner Park, S. 01° 18' W., a distance of 440.73 feet to a point;

Thence, along the northern right-of-way line of said Ninth Street, N. 84° 09' 30" W., a distance of 1.003 feet to the place of beginning.

The following description designates a parcel of land dedicated and accepted as a part of the Borough Of Donora's public roadway system.

Being a part of Deed Description, recorded in DBV 0411, Page 0366, in Washington County, Pennsylvania.

FOUNDERS:

A. A. McDONALD, P.E.

R. P. BIGLER, P.E.

C. VANCE DEI CAS, P.E.

**ESTABLISHED
1920**

McDONALD ASSOCIATES

~ ENGINEERING ~

ONE TWILIGHT HOLLOW ROAD
CHARLEROI, PENNSYLVANIA 15022

724-483-8041

FAX 724-483-5690

November 13, 2000

Borough Of Donora

Cypress Drive Addition to

Liquid Fuels Tax Allocations

Center line description from Ninth Street to McKean Avenue.

BEGINNING at a point located on the center line of Cypress Drive, said point also being located on the northern right-of-way line of Ninth Street;

THENCE, along said center line, the following two (2) courses and distances,
N. 01° 18' E., a distance of 427.44 feet to a point;

THENCE, N. 88° 42' W., a distance of 108.00 feet to the eastern right-of-way line of McKean Avenue.

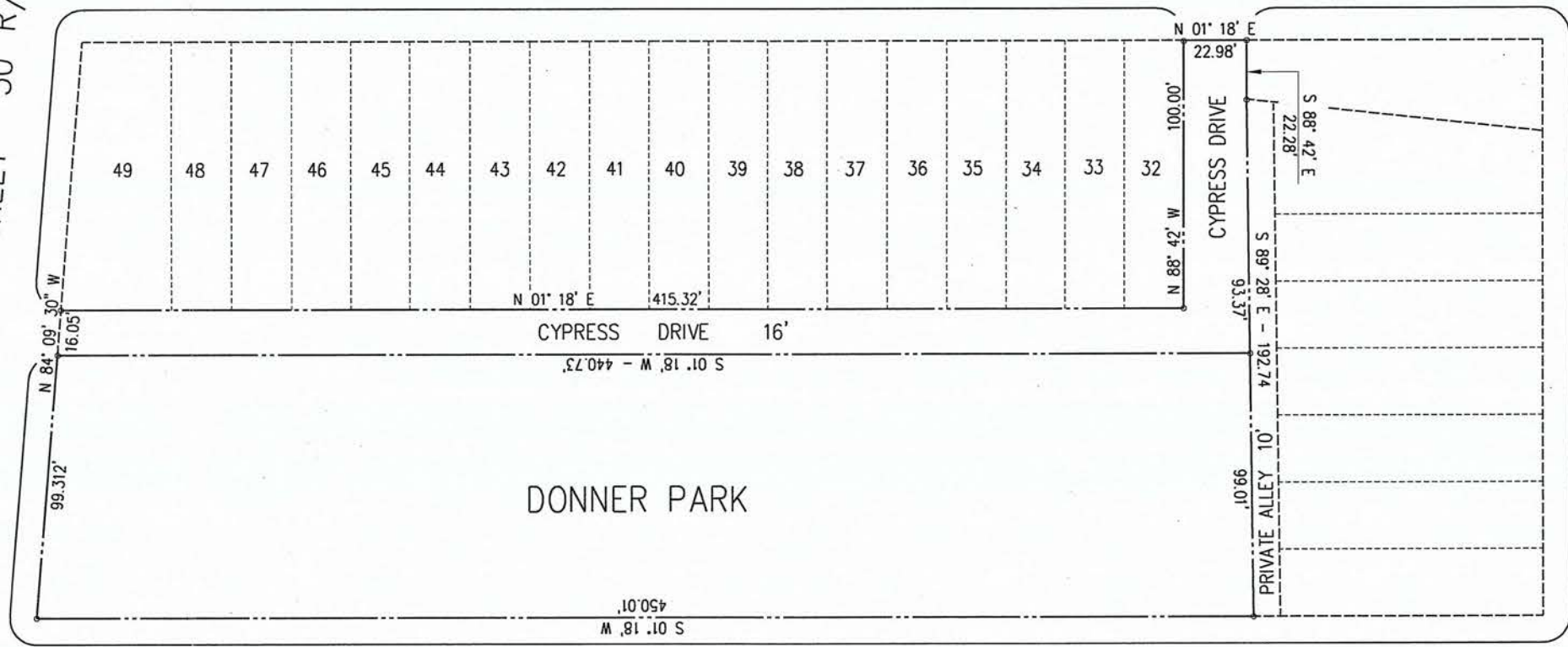
Total length as described 535.44 feet.



NINTH STREET 50' R/W

McKEAN AVENUE 60' R/W

TENTH STREET 50' R/W



F 337-54
NB

DRAWN	JEC	11/13/00
CHECKED		
APPROVED		
REVISIONS		
1	JEC	9/13/01

BOROUGH OF DONORA
REVISED RIGHT-OF-WAY
FOR CYPRESS DRIVE

McDONALD ASSOCIATES
-ENGINEERING-
ONE TWILIGHT HOLLOW ROAD
CHARLESTON, PA 15622
(724) 483-8244 FAX (724) 483-5690

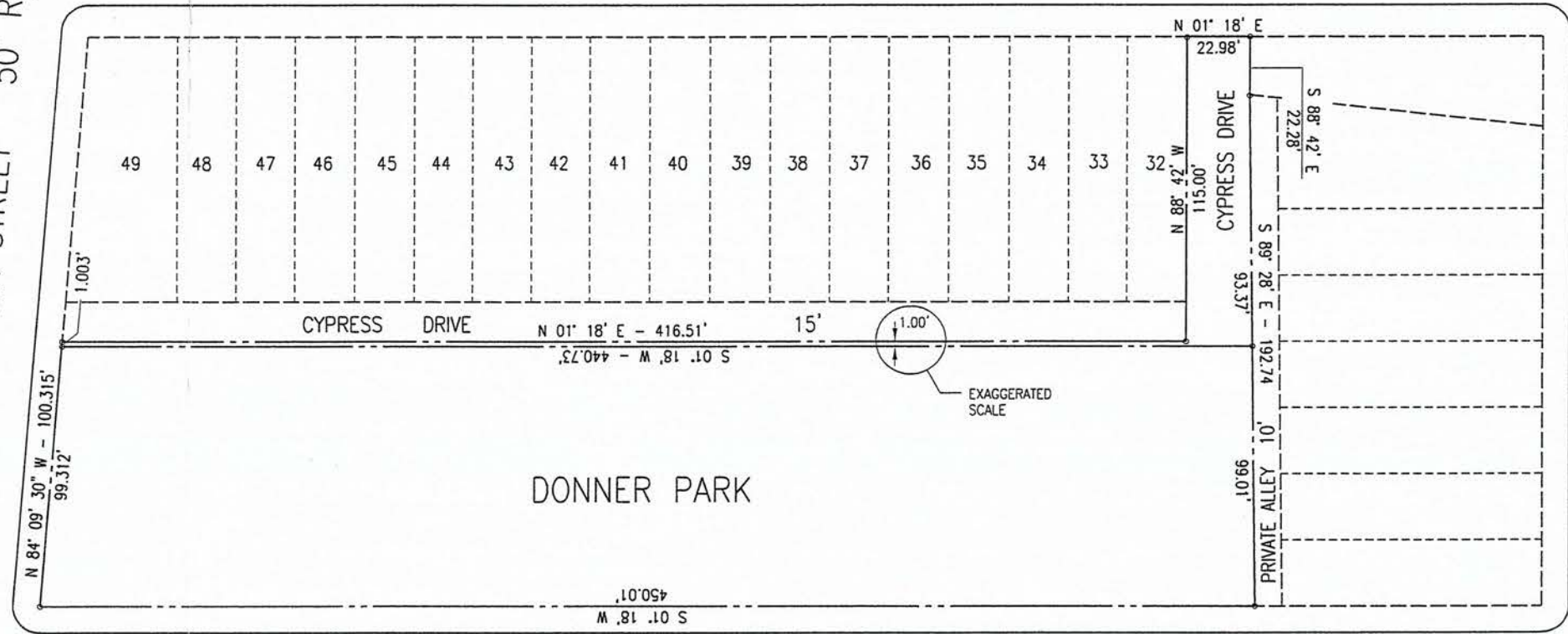
SCALE 1" = 60'
JOB 337-264.1
SHEET 1 OF 1



NINTH STREET 50' R/W

McKEAN AVENUE 60' R/W

TENTH STREET 50' R/W



DONNER PARK

EXAGGERATED SCALE
1.00'

F 337-54
NB

OWNER	JEC	11/13/00
CHECKED		
APPROVED		
REVISIONS		

BOROUGH OF DONORA
PROPOSED RIGHT-OF-WAY AMENDMENT
FOR CYPRESS DRIVE

McDONALD ASSOCIATES
-ENGINEERING-
ONE TWILIGHT HOLLOW ROAD
CHARLESTON, PA 15022
(724) 483-8041 FAX (724) 483-3800

SCALE 1" = 60'
JOB 337-264.1
SHEET 1 OF 1